

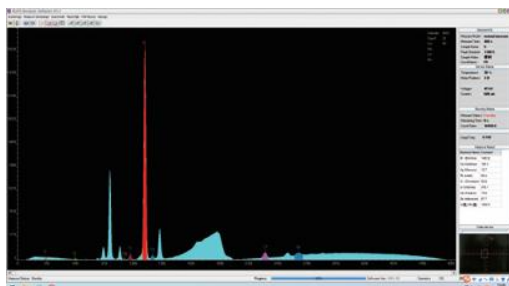
XRF PLATING THICKNESS INSTRUMENT/ROHS ANALYZER/ALLOY ANALYZER

CODE XRF-B210

CALIBRATION CURVE CAN BE CUSTOMIZED
ACCORDING TO CUSTOMER REQUIREMENTS



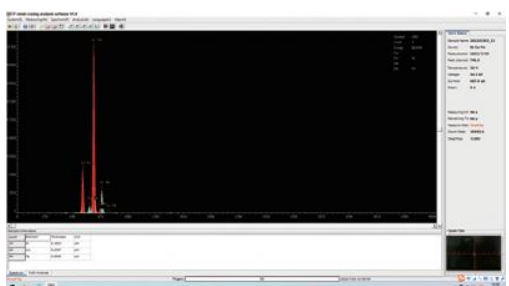
- Used for RoHS detection, alloy analysis, plating
- Using Si-PIN detector with electric cooling, small size, accurate data analysis and low maintenance cost
- Seven optical path correction and collimation system, automatically switch according to different samples
- Multiple radiation leakage prevention design
- The temperature monitoring technology ensures the safe and reliable operation of the X-ray source
- Dedicated software, standard window design, friendly interface, easy to operate
- Can display multiple spectrograms at the same time and print multiple report forms
- USB3.0 interface to ensure accurate, high-speed and efficient data transmission



RoHS test software (included)



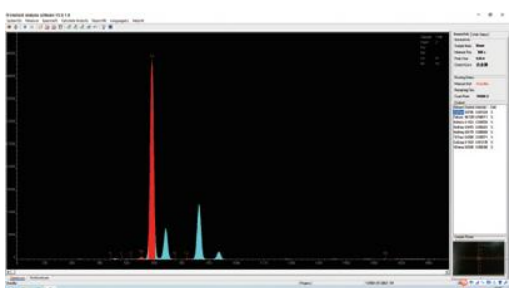
RoHS test report (included)



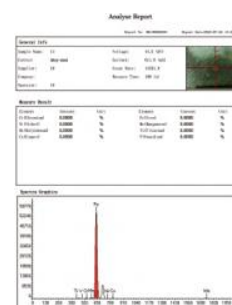
plating thickness detection software (included)



plating thickness test report (included)



alloy composition analysis software (included)



alloy composition analysis report (included)

SPECIFICATION

Detector	type	Si-PIN electrical refrigeration semiconductor detector
	resolution	149±5 eV
	amplifier circuit module	detect the sample characteristic X-ray, further enlarge the information collected by detection
X-ray excitation device	maximum output current	1mA
	power	50W, air cooling
High and low voltage power	maximum output voltage	50kV, built-in voltage overload protection
	minimum output voltage	5kV
Multi-channel pulse amplitude analyzer		maximum channel number: 4096
Optical path filter module		reduce interference light path in the process of sending x-rays, guarantee the accuracy of the detector signal
		Integrate the collimator with the filter
Collimator automatic switching module		7 kinds, Ø0.5~Ø8mm
Filter automatic switching module		5 kinds (free to choose and switch)
RoHS analysis	harmful element analysis	Cd, Pb, Hg, Br, Cr, Cl, As, Sb
	test time	60~200s
	detection limit	2PPM
	content analysis range	2PPM~99.9%
Alloy analysis	elemental analysis range	Ti~U
	detection limit	100PPM
	content analysis range	100PPM~99.9%
	repeatability	0.1%
	stability	0.1%
Plating analysis	elemental analysis range	Ti~U
	detection limit	0.01µm
	analysis thickness	single layer thickness 0.01~30µm
		3 layer thickness≤10µm
	repeatability	0.1µm (for outside plating less than 1µm)
	stability	0.1µm (for outside plating less than 1µm)
	light spot	within 0.2mm
Operating temperature		10~30°C
Relative humidity		10%~90%
Power supply		AC220V±5V
Dimension (W×D×H)		460×700×370mm
Weight		49kg

STANDARD DELIVERY

Main unit	1 pc
Standard sample	1 pc
Silver calibration	1 pc
Sample cup	2 pcs
Test film	50 pcs
Computer	1 pc
Printer	1 pc
Collimator (Built-in)	7 pcs
Software	RoHS test software, alloy composition analysis software, plating thickness detection software